



colour laser printer

Small size.
Larger than life
colour.



Phaser[®] 6120

Colour Laser Printer

Fill your office with brilliant colour.

Introducing the Xerox Phaser 6120 colour laser printer.

This printer offers legendary Phaser colour, outstanding media flexibility and a smart, compact design. Plus, it's so easy to install and use, it's ideal in any small office.



Precise Phaser colour

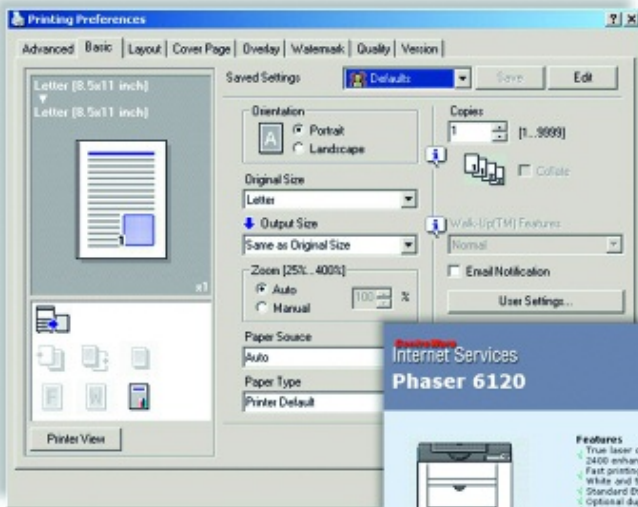
Why settle for "average" colour when you can get exceptional quality colour from the Xerox Phaser 6120 laser printer.

- Brilliant high resolution colour. Delivers amazing fine-line detail.
- Professional results. True-to-life colour and Pantone certification mean that you'll always get the colour you want.
- Affordable quality. This printer offers industry standard colour tools that colour professionals will appreciate.

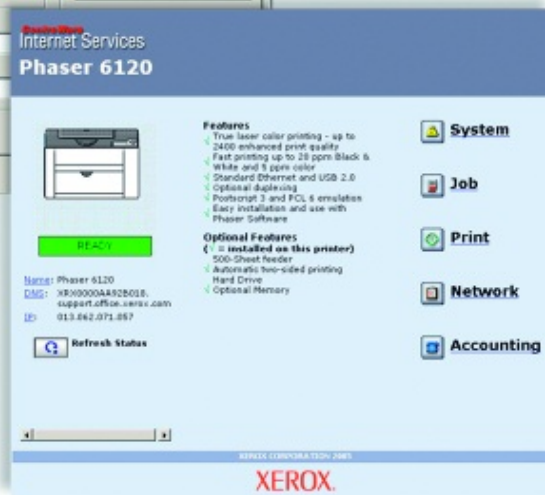
Excellent media flexibility

When it comes to media handling, most small office lasers offer the bare minimum. Not the Phaser 6120 laser printer. It makes no compromises.

- Custom jobs made easy. This printer comes with a standard 200-sheet multipurpose tray that supports media as narrow as 10.2 cm and as long as 35.6 cm. And printing envelopes and labels is easy.
- One-sided printing not enough? This printer enables two-sided printing with an optional duplex unit.
- Presentations with impact. This printer produces vibrant, full-colour transparencies that make any presentation come to life.
- Large jobs welcome. High-output users can opt for an affordable 500-sheet feeder, bringing the total input capacity to 700 pages.



Printing setup is simple and automatic with the Phaser 6120.



CentreWare IS makes it easy to manage printers remotely.

All around simplicity

From installation to everyday use, the Phaser 6120 printer is a no-hassle office solution.

- Easy, easy, easy. The Phaser 6120 was carefully engineered from the ground up to make it simple to use.
- Pre-installed toners and imaging unit make this printer virtually plug-and-play. It's so easy, you'll have it up and printing in minutes.
- Stay seated. The embedded CentreWare IS web server enables IT administrators and end-users to manage printers from their own computers.
- Troubleshooter. PrintingScout* delivers instant printing alert information right to your workstation.

*Available early 2006

- Smart design. No more reaching behind the printer to replace a print or drum cartridge. This printer was designed with front-access for user interventions. Even jam clearance is easy.
- Mac friendly. It has easy-to-use drivers for both PCs and Macs and supports all major print description languages, including PostScript® 3, PCL® 6, PCL 5c and PCL 5e.
- No waiting. A powerful 300 Mhz processor rips images fast. Connect the way you want with parallel, high-speed USB 2.0 and 10/100Base-TX Ethernet – all standard.

Designed for greatness

The Phaser 6120 makes a statement in any office. It offers excellent media handling with optional add-ons to enhance your office productivity. Who would have thought something so small could pack in so much?

- ① Variety encouraged. The 200-sheet multipurpose tray 1 supports a wide range of media; from transparencies to labels, card stock to envelopes.
- ② Business growing? Add on this optional 500-sheet feeder as your needs expand.
- ③ Print multiple jobs. The 200-sheet output tray allows for longer unattended operation.

Double up. This printer offers optional automatic two-sided printing.

Optional hard disk drive offers advanced features such as Saved Print and Secure Print, plus flawless collation on multi-set jobs.



Phaser 6120 printer shown with optional 500-sheet feeder

Call today. For more information, call 00 800 9000 9090
or visit us at www.xerox.com/office.



CONFIGURATIONS		Phaser 6120N
Speed		Up to 5 ppm colour / 20 ppm black and white
Duty Cycle		Up to 35,000 pages / month
Paper Handling		
Paper Input	Standard	200-Sheet Multipurpose Tray 1
	Optional	500-Sheet Tray
Automatic 2-sided Printing		Optional
Print		
First Page Out		As fast as 22 seconds colour / 13 seconds black and white
Resolution		2400 Enhanced
Processor		300 MHz, 32 bit RISC
Language Support		PostScript® 3, PCL® 5c / PCL 6 / PCL 5e emulations
Connectivity		Parallel, USB 2.0, 10/100Base-TX Ethernet
Memory (Std / Max)		128 MB / 640 MB
Internal Hard Drive		Optional (20 GB or greater)
Print Features		Booklet printing, Watermarks, Custom page sizes, Favourites (Driver macros), Scaling, Scale-to-fit, N-up printing, Forms, Toner levels, Built-in support links, Job retention features, PrintingScout® Alert Notification
Warranty		One year on-site

*Available early 2006

SPECIFICATIONS

Network/Software

Printer management CentreWare® IS Embedded Web Server, PrintingScout Alert Notification, CentreWare Web

Font capabilities 139 Resident PostScript fonts and 81 PCL

Printer drivers Windows 98/Me/NT 4.0/2000/Server 2003/XP Pro/ XP Home SP 1 or greater, Mac OS 9.2/OS X version 10.2 or greater, Linux Red Hat/SuSe, Walk-up printing driver

Language support PostScript 3, PCL® 5c, PCL 6, PCL 5e emulations

Paper handling

Maximum input capacity 700 sheets

Multipurpose Tray 1 (standard)

60 – 163 gsm, Transparencies, Labels, Envelopes, Card stock. Media sizes: Letter, Legal, Folio, Executive, Statement, Index card, A4, A5, A6, B5-ISO, B5-JIS, Envelopes: #10 Commercial, Monarch, DL, C5, C6

500-Sheet tray (optional) 60 – 90 gsm. Media sizes: Letter, A4. Custom sizes 92 x 148 mm to 216 x 356 mm

Automatic two-sided printing (optional)

(shipped with an additional 128 MB memory)
75 – 90 gsm. Media sizes: Letter, A4, Folio Legal 13 in., Legal 14 in. from all trays

Maximum output capacity 200 sheets

Special features

PrintingScout® Instantly displays pop-up help if attention is needed throughout print job

Productivity tools Booklet printing, Watermarks, Custom Page Size Default Registers, Favourites (Driver macros), Scaling and Scale-to-fit, N-Up Printing, Forms, Toner Levels, Built-in Support Links, Job Retention Features. Optional Hard Drive supports: font storage, forms, colour profiles, job accounting, electronic collation, PDF direct printing, proof print, saved print and secure print.

Colour controls

Colour standards PANTONE®-approved solid-colour simulations. Postscript device-independent colour.

Selectable print-quality modes 2400 Enhanced; 600 dpi

Operating

Dimensions width: 442 mm, height: 341 mm, depth: 395 mm, weight (with consumables): 20.2 kg; weight (packaged) 24.4 kg

Environment Temperature Non-operating: -20° – 40° C, Operating: 10° – 32° C; Relative Humidity: Non-operating: 10 – 85% RH, Operating: 10 – 80% RH

Noise level < 35 dB standby, < 54 dB running

Electrical 200 – 240 VAC / 100 – 127 VAC at 50/60 Hz; Power consumption: Printing 380 W (black and white), 290 W (colour), Idle 90 W, Power Saver 27 W, ENERGY STAR® qualified printer

Regulatory Listed to UL 60950-1/CSA 60950-1-03, 1st Edition. Class 1 Laser Product. FCC Part 15, Class B. CE marked in accordance with the Low Voltage Directive 73/23/EEC and EMC Directive 89/336/EEC. Section 508 ADA.

Customer Support

One year on-site warranty, online web technical support and telephone support. Innovative service offerings include on-site and extended Service Agreements.

SUPPLIES AND OPTIONS

Consumables	
Standard-Capacity Toner Cartridges*	
Cyan (1,500 pages)	113R00689
Magenta (1,500 pages)	113R00691
Yellow (1,500 pages)	113R00690
High-Capacity Toner Cartridges*	
Cyan (4,500 pages)	113R00693
Magenta (4,500 pages)	113R00695
Yellow (4,500 pages)	113R00694
Black (4,500 pages)	113R00692

*Capacities are approximate, based on 5% coverage on an A4-sized page.

The toner cartridges are part of the Xerox Green World Alliance supplies recycling program. For more information, please visit the Green World Alliance web site at www.xerox.com/gwa

Routine Maintenance Items	
Imaging Unit	108R00691
(up to 20,000 pages black/up to 10,000 pages colour: assumes average job size of three pages.)	

Options	
500-Sheet Feeder	
Letter	097S03484
A4	097S03489
Hard Disk Drive	097S03485
Duplex Kit (includes 128 MB Memory)	097S03483

Outstanding Media Capability

Take full advantage of the Phaser 6120 colour printer with our comprehensive Xerox Paper and Speciality Media portfolio, which includes a selection of papers, labels and transparencies that come in a variety of weights and sizes. For a current listing of all recommended printing media visit:

www.xerox.com/office/6120supplies

